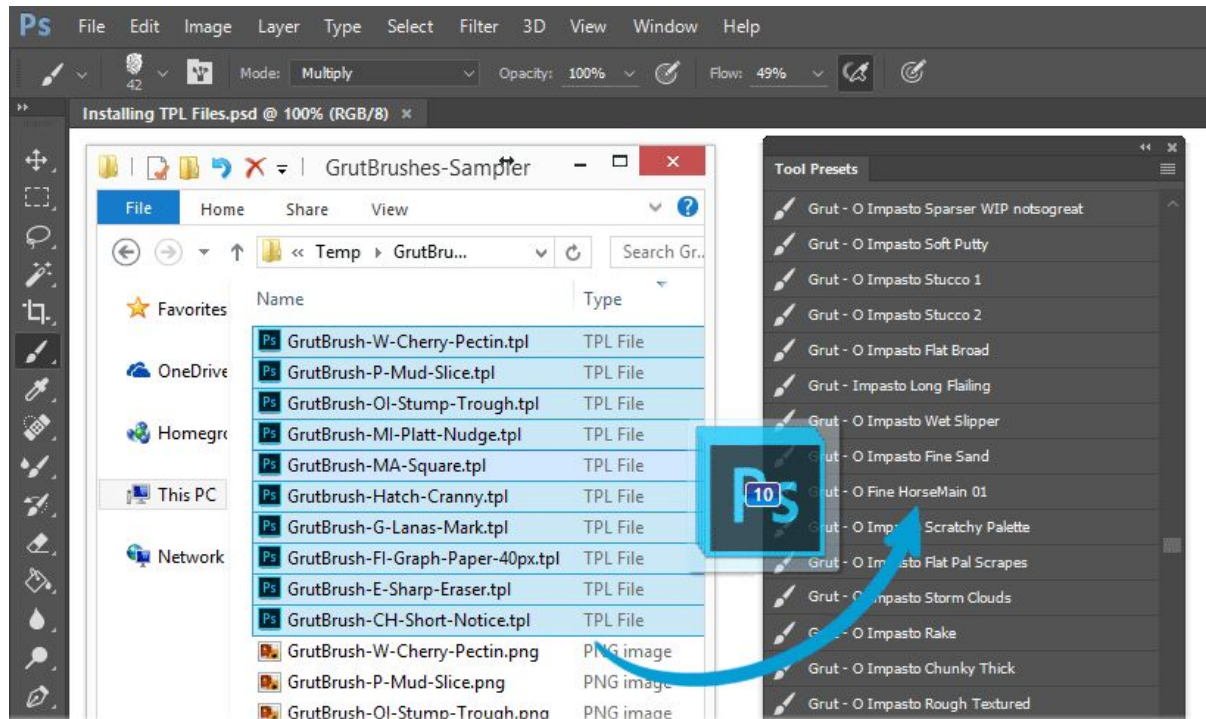
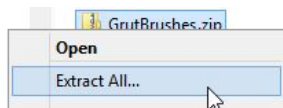


How to Install GrutBrushes TPL Brushes

➤ Method A Drag and Drop



1. Extract/Unzip the .zip file (important! Don't try to drag to install without extracting)



2. Select all the GrutBrushes TPL files (**only** the TPL files) that you want to install and drag them onto the Tool Presets Panel or the Photoshop Icon.
3. They will appear in the Tool Presets panel (*Window > Tool Presets*) Not in the Brush panel.

That's it, Start Painting!

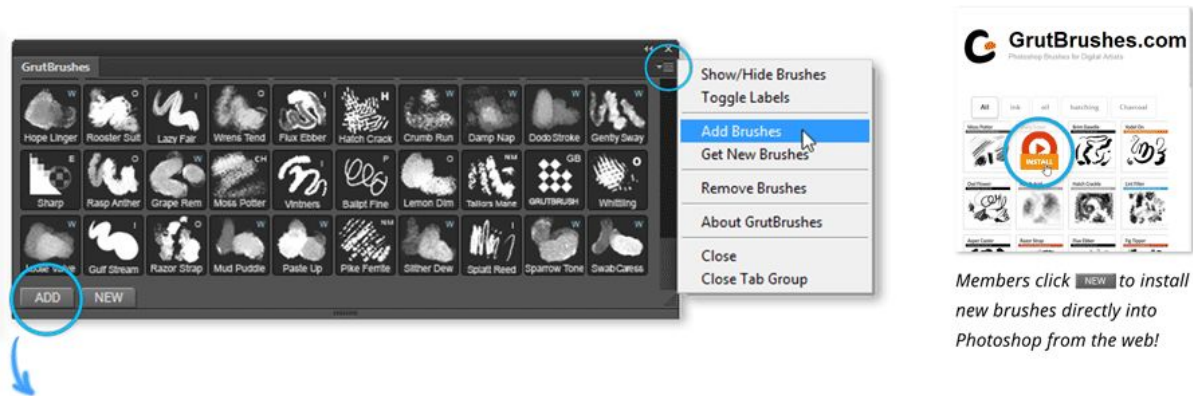
Don't See your GrutBrushes?

- You will not find them in the brushes panel! They are tool presets (tpl files) not abr files
- Make sure that 'Current Tool Only' is un-checked at the bottom left of the Tool Presets panel.

More help online: <http://grutbrushes.com/help/#howtoinstall>

➤ Method B - Using the Free GrutBrushes Plugin Panel

(Photoshop CC 2014/15/17 **only**) Available at <http://grutbrushes.com/plugin>



1. Click on the '**ADD**' button to add brushes from your hard drive
2. Select the GrutBrushes you want on your hard drive. They will then appear in the GrutBrushes panel.

That's it, Start Painting!

Want more brushes?

Get every single Art Brush plus a free membership at <http://GrutBrushes.com/artbrushes>



Visit <http://grutbrushes.com/help> for help if you need it